



OLETIĆ GPI Inženiring d.o.o. specializes in the manufacture, machining, and sale of various steel structures, machinery, machine parts, tools, and water turbines. The products are manufactured according to the customer's documentation. The company currently employs 25 people and the number grows each year.

At OLETIĆ GPI Inženiring d.o.o. we aware that business success can only be achieved if we provide high quality products within the desired delivery time to our customers. For our company, achieving this is a top priority at every step.

The company has the following quality certificates, within which it provides customers with products of the required quality:

- EN ISO 3834–2
- EN 1090-1, EN 1090-2 – EXC2
- EN ISO 14001

Our production program is divided into the following segments:

- Machining
  - Boring and milling
  - Turning
  - Roll bending
- The manufacture of steel construction in accordance with
  - EN ISO 3834-2
  - EN 1090-1, EN 1090-2 – EXC2
  - MIG/MAG/TIG Certified Welders
  - IWE – International Welding Engineer
- The manufacture of water turbines for small hydropower plants
  - Welding
  - Machining
  - Corrosion protection
  - Mounting



## BORING AND MILLING MACHINE



	<b>TOS Varnsdorf WHN 13 CNC</b>	<b>TOS Varnsdorf WHN 13 CNC</b>
Year of Prod:	2006	2013
Steering:	HEIDENHAIN	HEIDENHAIN
Table:	3.000 x 2.500 mm	2.500 x 2.000 mm
Table load:	25.000 kg	25.000 kg
X – Travel:	5.000 mm	6.000 mm
Y – Travel:	2.500 mm	3.500 mm
Z – Travel:	1.600 mm	1.800 mm
W – Travel:	800 mm	800 mm
Spindle diameter:	130 mm	130 mm





## 5 AXES MILLING MACHINE



### **DMG MORI DMF 300|11**

Year of Prod:	2026
Steering:	SIEMENS 840D
Table:	3.600 x 1.100 mm with 1.050mm Mill-Turn-table
Table load:	6.000 kg
X – Travel:	3.000 mm
Y – Travel:	1.100 mm
Z – Travel:	1.050 mm

NO PICTURES YET

## 4 AXES MILLING MACHINE



	<b>MICROCUT AXILE V7</b>	<b>FIRST MCV1500</b>
Year of Prod:	2021	2008
Steering:	HEIDENHAIN	HEIDENHAIN
Table:	1.400 x 710 mm	1.460 x 600 mm
Table load:	1.000 kg	1.000 kg
X – Travel:	1.200 mm	1.500 mm
Y – Travel:	730 mm	760 mm
Z – Travel:	650mm	680 mm



## CNC LATHE



	<b>WAGNER WDC 560 x 1.500</b>	<b>WAGNER WDC 760 x 3.000</b>
Year of Prod:	2016	2023
Steering:	SIEMENS	SIEMENS
Swing over cross:	390 mm	560 mm
Swing over bed:	560 mm	760 mm
Turning lenght:	1.140 / 1.500 mm	2.660 / 3.000 mm
Hole through hyd. chuck:	80 mm	105 mm





## HYDRAULIC 4 ROLL PLATE BENDING MACHINE



### MG M 2020 C

Year of Prod:	2016
Top roll diameter:	280 mm
Lower roll diameter:	260 mm
Side rolls diameter:	220 mm
Working length:	2.050 mm
Rolling capacity:	20 mm
Pre-bending capacity:	14 mm



## OTHER MACHINES

### ADA Potisje PA35-2000 Turning machine

Swing over cross 500 mm	Swing over bed 700 mm	Turning length 2.000 mm
----------------------------	--------------------------	----------------------------

### PILOUS ARG 500 plus Band saw

	90°	-45°	+45°	+/- 60°
●	500	500	500	350
■	450	440	440	310
■	620 x 450	440 x 450	430 x 450	310 x 400

### Welding positioners

Varstroj	P-1000-M	1.000,0 kg	2011
Varstroj	P-3000-M	3.000,0 kg	2013
Varstroj	P-6000-M	6.000,0 kg	2019
Varstroj	ON – 10t	10.000,0 kg	2019

### Cranes

Abus H2/B3	12,5 t	2009
Abus H2/B3	2x6,3 t	2012
Abus H2/B3	12,5 t	2013

### Forklift

Yale	3,0 t	2019
Litostoj	5,0 t	1998
Hyundai	8,0 t	2016



## CRANE INDUSTRY PARTS





## ROLL CRUSHERS

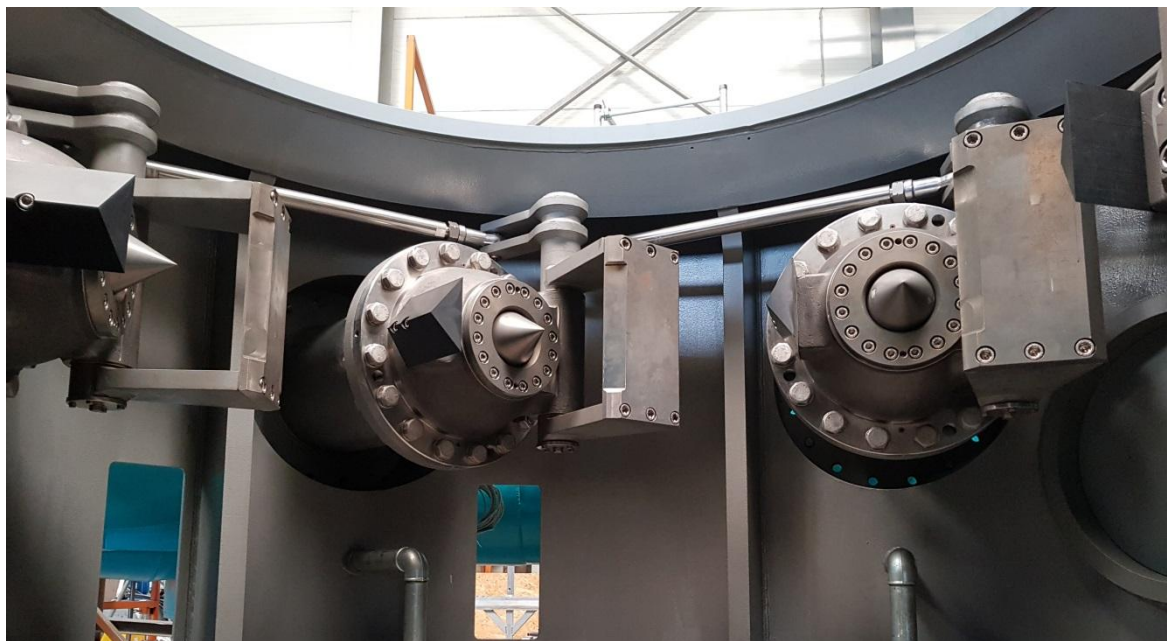


## STEEL STRUCTURES

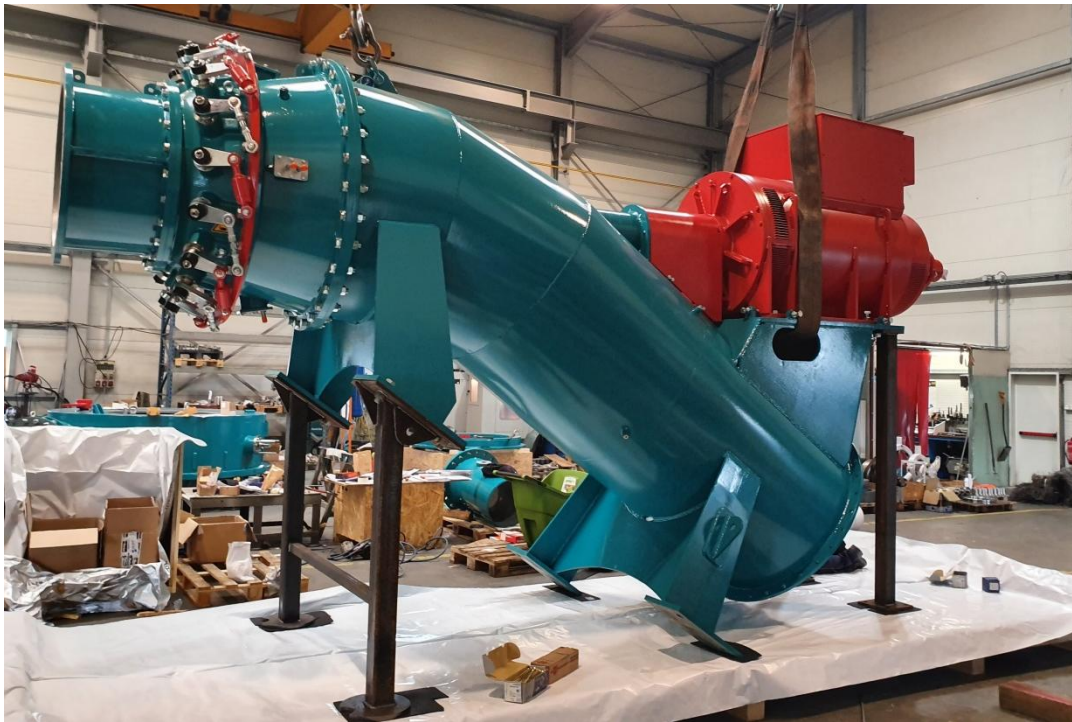




## PELTON TURBINES



## KAPLAN TURBINES





## FRANCIS TURBINES





Company	<b>Oletić GPI Inženiring d.o.o.</b>
Adress	Industrijska ulica 7 9220 Lendava Slovenija
Director	Goran Oletić
VAT Nr.	SI18673414
E-mail	<a href="mailto:info@oletic-gpi.com">info@oletic-gpi.com</a>
Web	<a href="http://www.oletic-gpi.com">www.oletic-gpi.com</a>
Phone	+386 (0)2 5789 620



**OLETIĆ GPI Inženiring d.o.o.**

Industrijska ulica 7, 9220 Lendava  
tel. +386/2 57 89 620 ♦ fax. +386/2 57 89 622  
Info@oletic-gpi.com ♦ www.oletic-gpi.com

Machining – Mechanical engineering – Water turbines